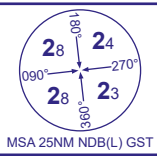


INSTRUMENT APPROACH CHART - ICAO

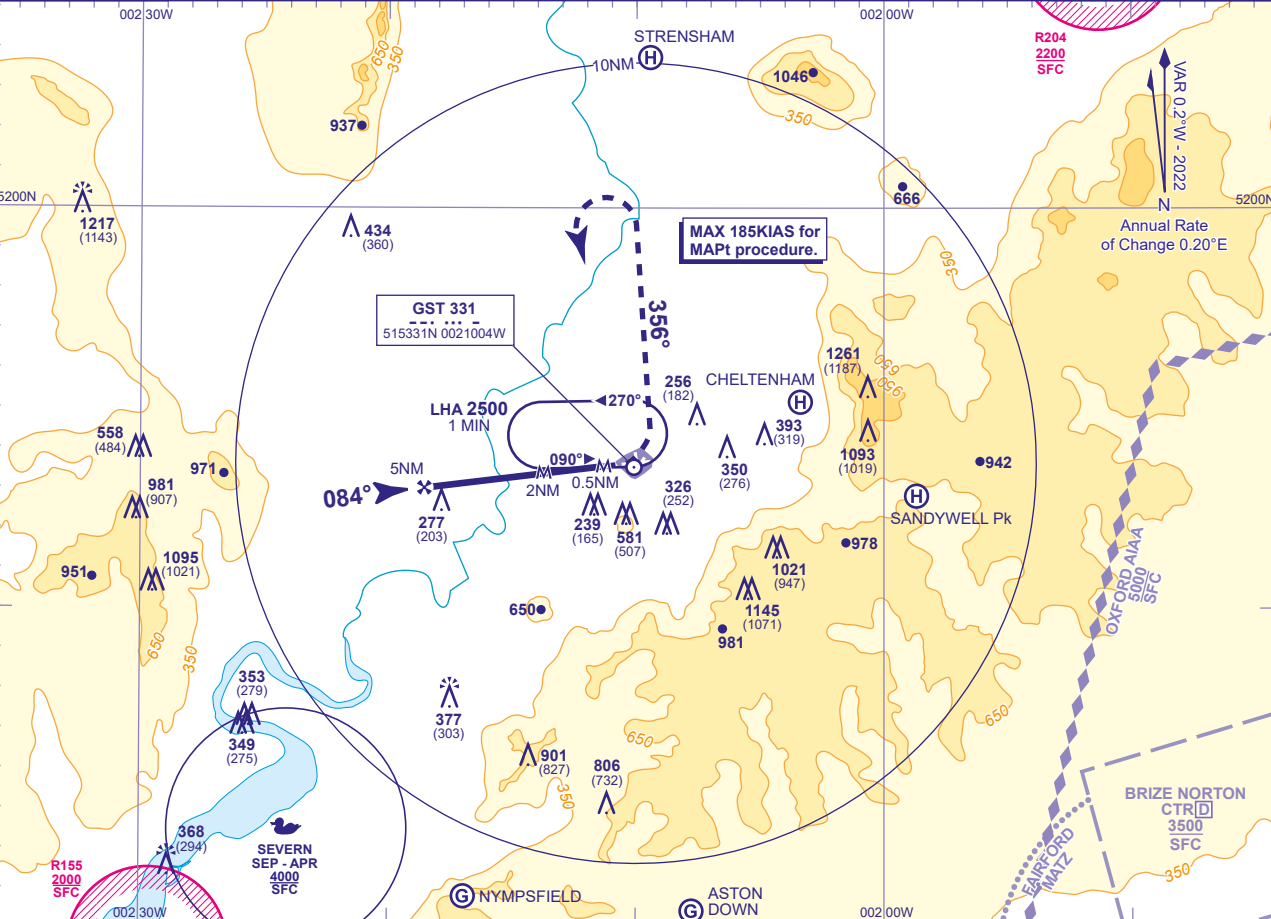
GLOUCESTERSHIRE

SRA RTR  
0.5NM/2NM  
RWY 09  
(ACFT CAT A,B,C)



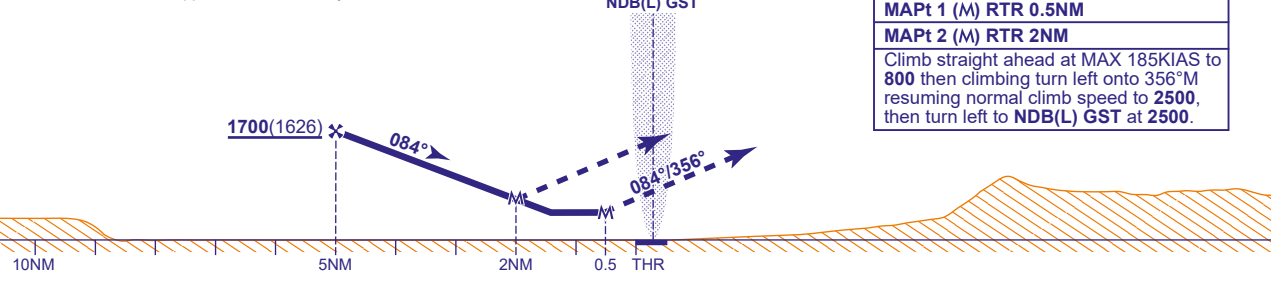
APP	128.555	GLOSTER APPROACH	AD ELEVATION	101
TWR	122.905	GLOSTER TOWER	THR ELEVATION	74
RAD	128.555, 120.980	GLOSTER RADAR	OBSTACLE ELEVATION	1261 AMSL (1187) (ABOVE THR)
ATIS	127.480	GLOSTER INFORMATION	BEARINGS ARE MAGNETIC	

TRANSITION ALTITUDE  
3000



RADAR ADVISORY HEIGHTS Gradient 5.4%, 330FT/NM				
NM	5	4	3	2
ALT(HGT)	1700(1626)	1370(1296)	1040(966)	710(636)

Initial and Intermediate Approach as directed by radar.



MAPt 1 (M) RTR 0.5NM  
MAPt 2 (M) RTR 2NM  
Climb straight ahead at MAX 185KIAS to 800 then climbing turn left onto 356°M resuming normal climb speed to 2500, then turn left to NDB(L) GST at 2500.

Aircraft Category		A	B	C		Rate of descent	G/S KT	160	140	120	100	80
OCA (OCH)	SRA RTR 0.5NM	520(446)	520(446)	520(446)			FT/MIN	850	740	640	530	430
	SRA RTR 2NM	710(636)	710(636)	710(636)								
VM(C)OCA (OCH AAL)	Total Area	1000(899)	1000(899)	1500(1399)								
	North of RWYs 04/22 and 09/27	830(729)	830(729)									

- NOTES
- Aircraft will normally be required to hold not lower than 4000 or the equivalent FL.
  - No missed approach turns permitted before MAPt.
  - Radar Advisory Ranges are referenced to RWY 09 touchdown point.

CHANGE (7/21): DEFFORD HIRTA REMOVED. MAG VAR. MAG TRACKS. AD 2.10 OBSTACLES REVISED. ULLENWOOD HELI REMOVED. SANDYWELL PK ADDED.